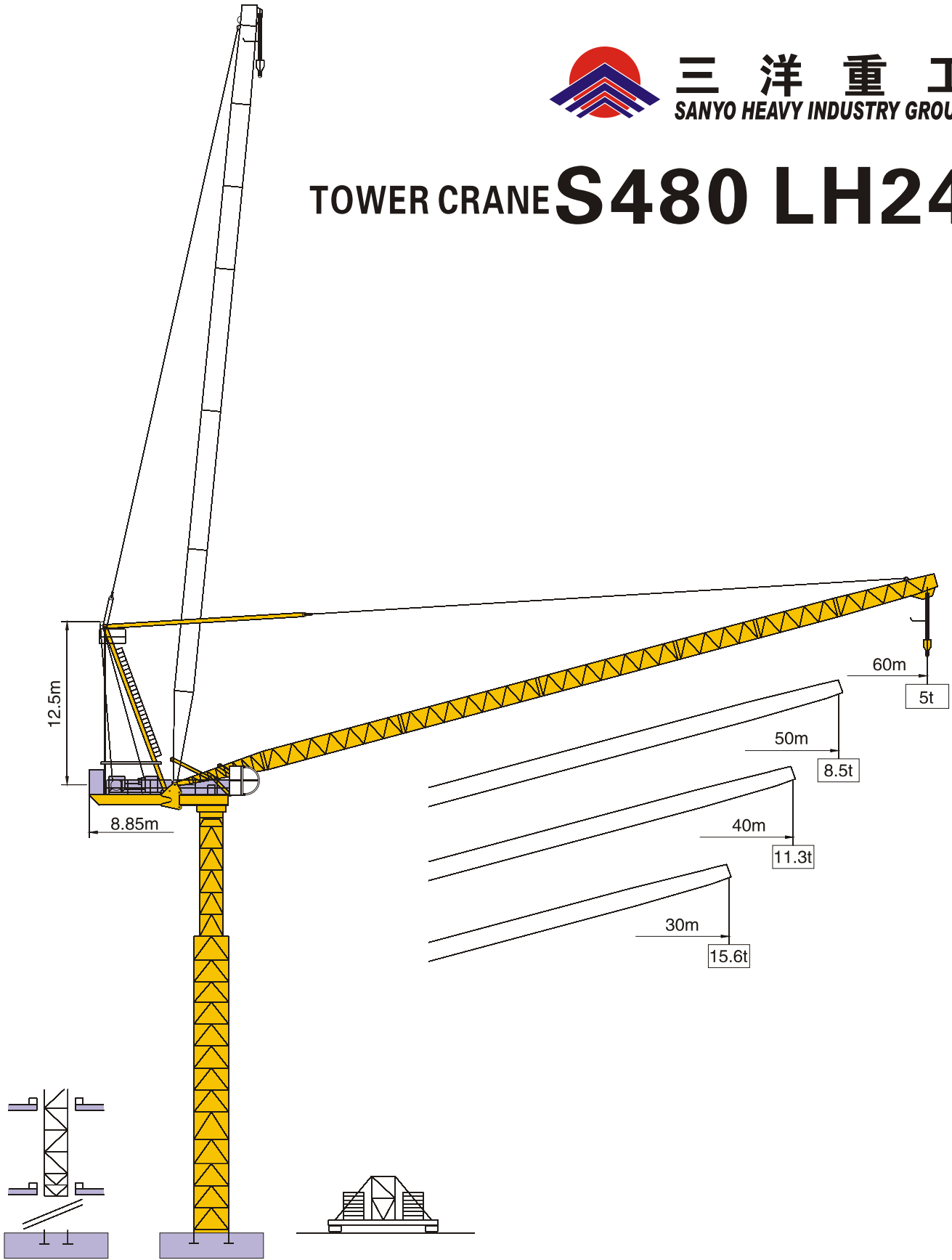




三洋重工  
SANYO HEAVY INDUSTRY GROUP

# TOWER CRANE S480 LH24



通过ISO9001国际质量体系认证

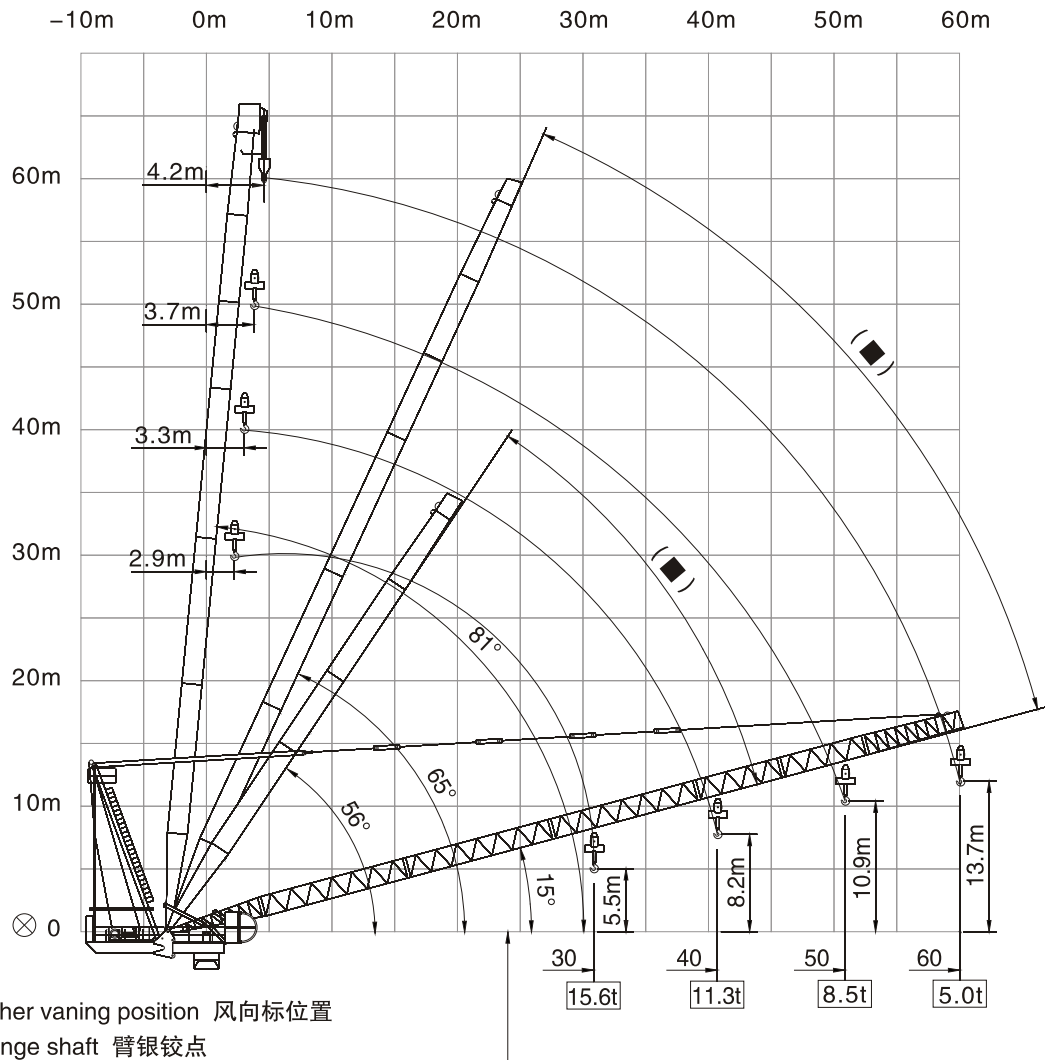


中国 沈阳三洋建筑机械有限公司

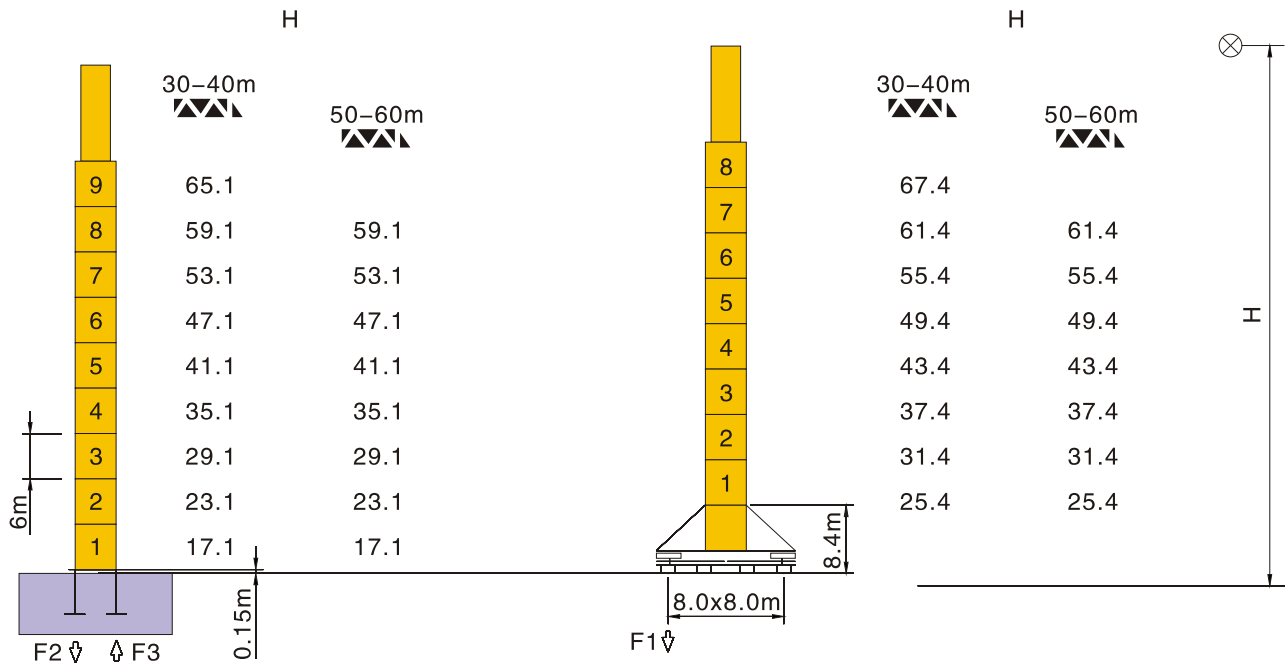
SHENYANG SANYO BUILDING MACHINERY CO., LTD. CHINA

载荷特性 Load Diagrams

60m	5.9 →					26	28	30	35	40	45	50	55	60	m								
▲▲▲	↓													12	11.4	10.6	9.0	7.8	6.9	6.1	5.5	5.0	t
50m	5.2 →	23.6	24	25	26	28	30	35	36.1	40	45	50	m										
▲▲▲	↓↓	18	17.7	17.0	16.3	15.0	13.9	11.8	11.0	10.2	8.9	7.9	t										
	↓													12.0	10.8	9.5	8.5	t					
40m	4.4 →	18.8	20	22	24	25	26	28	30	35	37.8	40	m										
▲▲▲	↓↓	24.0	22.8	20.4	18.8	17.8	17.1	15.8	14.7	12.4	11.5	10.7	t										
	↓													12	11.3	t							
30m	3.7 →		20	22	24	25	26	28	30	m													
▲▲▲	↓↓		24.0	21.7	19.8	19.0	18.2	16.8	15.6	t													
	↓								12.0	t													



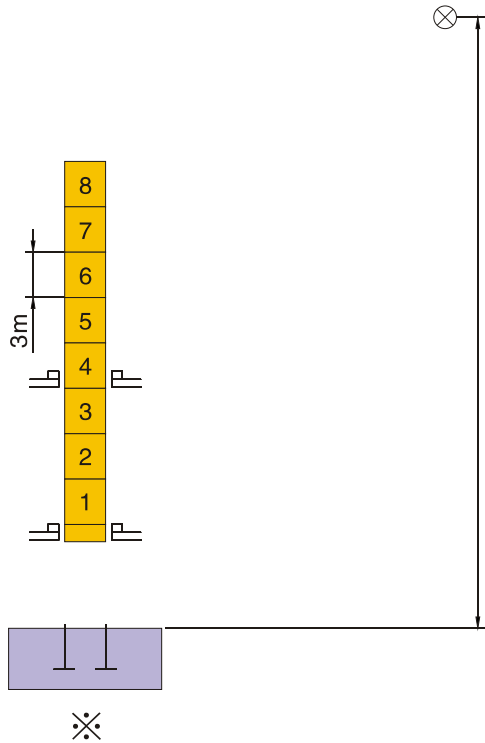
塔身 Mast:2.5m



F2	• 192t	▪ 282t
F3	• 75t	▪ 165t
	138t	

F1	• 110t	▪ 133t
	170t	

塔身 Mast:2.0m












F 反力 Reactions

- 工作状态 In service
- 非工作状态 Out of service

自重  
Self-load

不带载荷及配重, 最大臂长及标准高度时的自重。  
Without load and counter-weight with longest jib and standard height.

※ 采用这种方式请与制造商联系 Consult us

机构特性 Mechanisms specification								kW	
起升 Hoisting		LVF75	m/min	0-24	0-48	0-12	0-24	600	75
			t	12	6	24	12		
变幅 Trolleying		DVF75	min	4min ( 15° -87° )				75	
回转 Slewing		RCV	r/min	0.53				145Nm × 3	
行走 Travelling		TVF5.5	m/min	0-18.0				5.5 × 8	
 电源 Power Supply					380v 50Hz / 440v 60Hz				
 供电容量 Necessary Electric Power					315KVA				

※ 在这种情况下要同制造商协商 Consult us

各种参数以修改为准 subject to modification

执行标准 Voluntary Standards: GB/T 13752

 **中国 沈阳三洋建筑机械有限公司**  
 SHENYANG SANYO BUILDING MACHINERY CO., LTD. CHINA

厂址: 中国 沈阳市大东区东北大马路272号 邮政编码: 110044

电话: 024-88093933 88091979 (销售公司) 024-88902637 (海外销售部) 024-88091828 (售后服务)

传真: 024-88093057

网址: www.sys-china.cn 中文网络实名 (3721): 塔吊、塔式起重机、沈阳三洋重工

公司邮箱: SYS@sys-china.cn

海外销售部邮箱: overseas@sys-china.cn

售后服务部: service@sys-china.cn

任何非以@sys-china.cn 结尾的邮件均不代表沈阳三洋建筑机械有限公司的行为。

ADD:NO.272 Dongbei Damalu.Dadong District,Shenyang CHINA Postcode:110044

Tel: 86-24-88093933 88091979 (Sales Dept) 86-24-88902637 (Overseas Sales Department) 86-24-88091828(After Service)

Fax:86-24-88093057

Http:www.sys-china.cn

Company E-mail: SYS@sys-china.cn

Overseas Sales Department: overseas@sys-china.cn

After service: service@sys-china.cn

Any e-mail that doesn't interminate in "@sys-china.cn" is not Shenyang SANYO Building Machinery Co., Ltd. Performance.