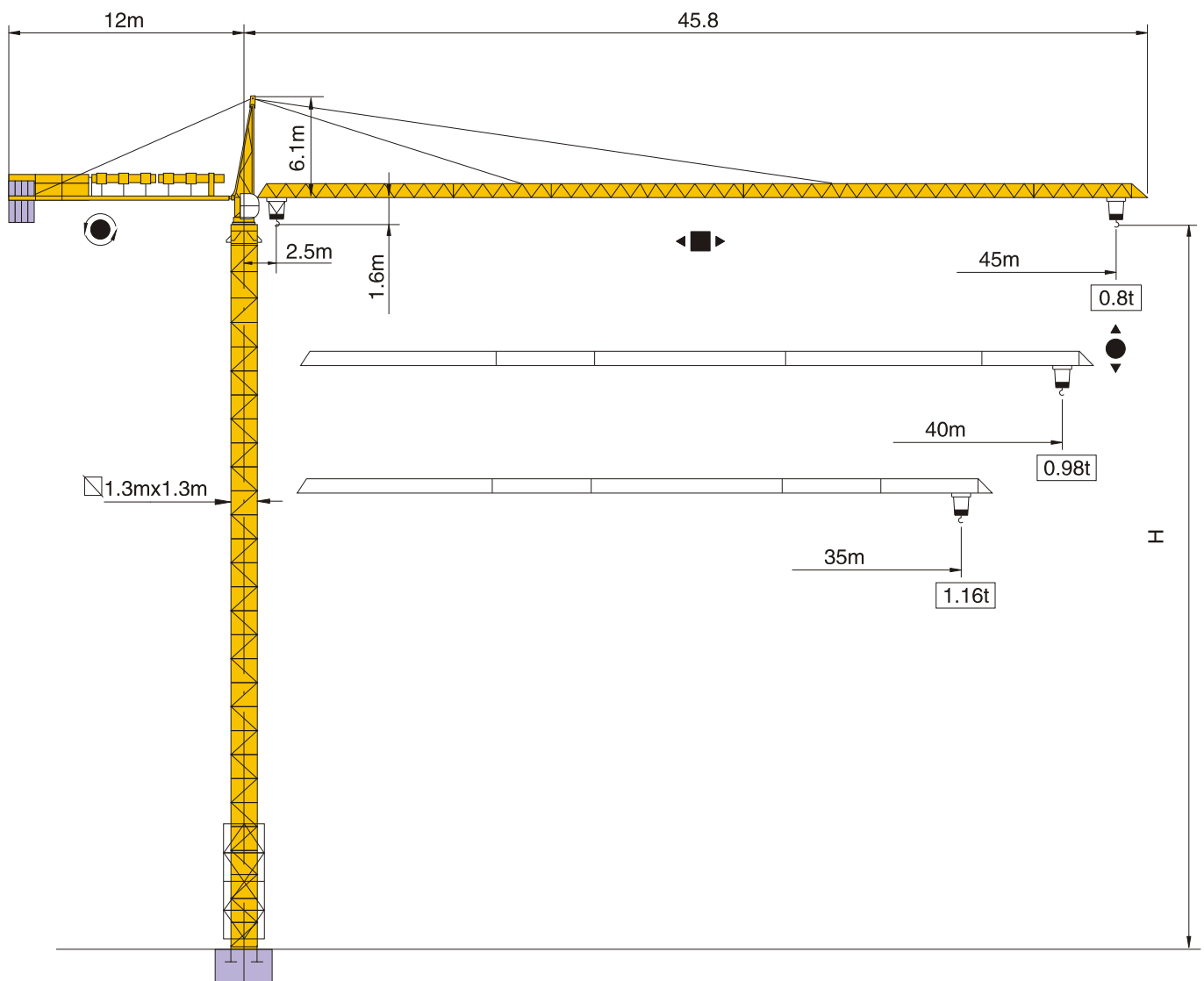


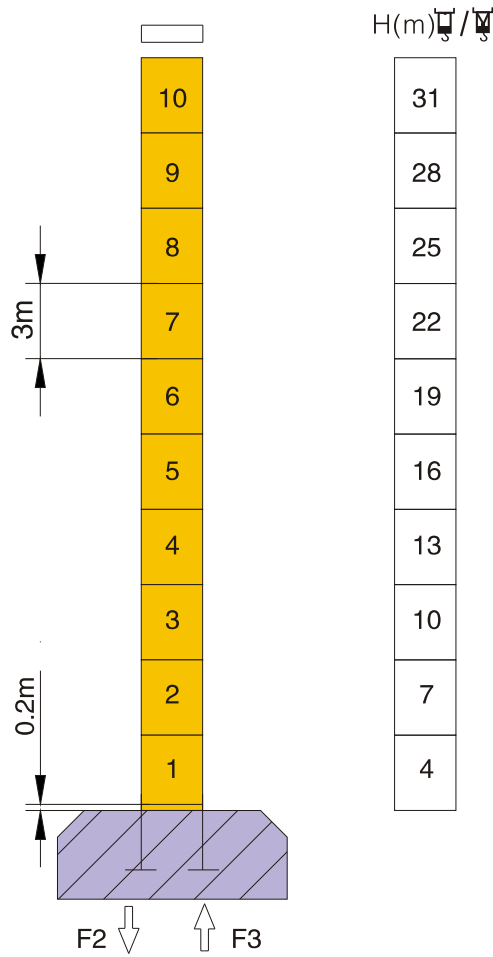
TOWER CRANE **S46 E4**

(QTZ400)



塔身截面 Mast □ 1.3mx1.3m

35m-45m



F2	● 35.4t	■ 36.3t
----	---------	---------

F3	● 22.2t	■ 25.1t
----	---------	---------

	18t
--	-----

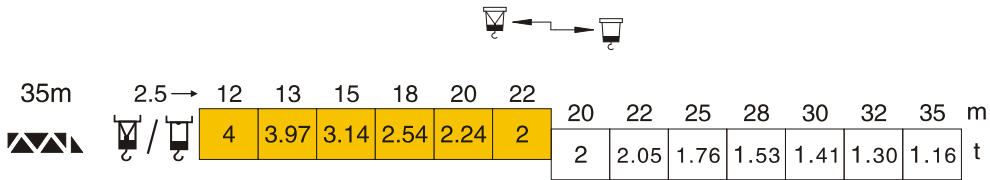
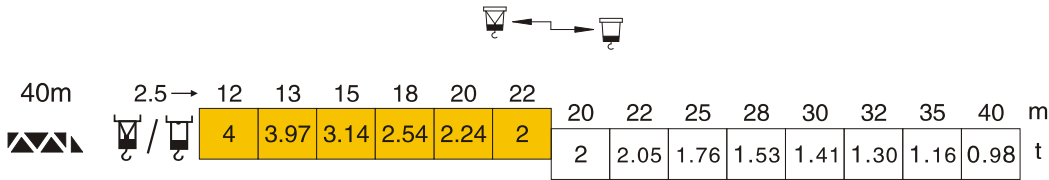
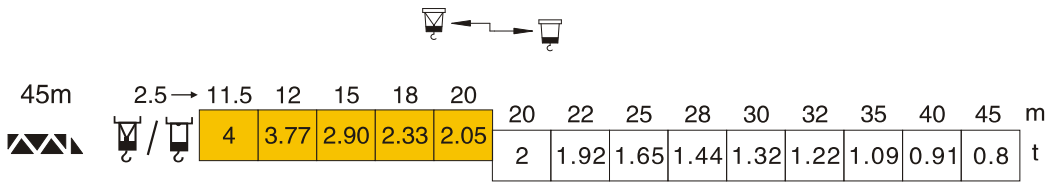
F 反力 Reactions

- 工作状态 In service
- 非工作状态 Out of service

自重 Self-load

不带载荷及配重, 最大臂长及标准高度时的自重。 Without load and counter-weight with longest jib and standard height.








载荷特性 Load Diagrams



/ 标准小车可使用2/4倍率绳
 (使用四倍率绳时应从二倍率载荷减去0.05t)。
 Standard trolley 2/4 fall (when using subtract 0.05t from the loads)

平衡臂配重 Counter-jib ballast

		(t)
45m	12m	5.64
40m	12m	5.25
35m	12m	4.47

机构特性 Mechanisms specification										 m	kW	
起升 Hoisting			m/min	0-60	0-30	0-7	0-30	0-15	0-3.5	200	15/15/4	
			t	1.0	2.0	2.0	2.0	4.0	4.0			
变幅 Trolleying			m/min	0-30						3		
回转 Slewing			r/min	0.45/0.7						2.2/2.8		
 电源 Power Supply				380v 50Hz / 440v 60Hz								
KVA 供电容量 Necessary Electric Power				26KVA								

※ 在这种情况下要同制造商协商 Consult us

各种参数以修改为准 subject to modification