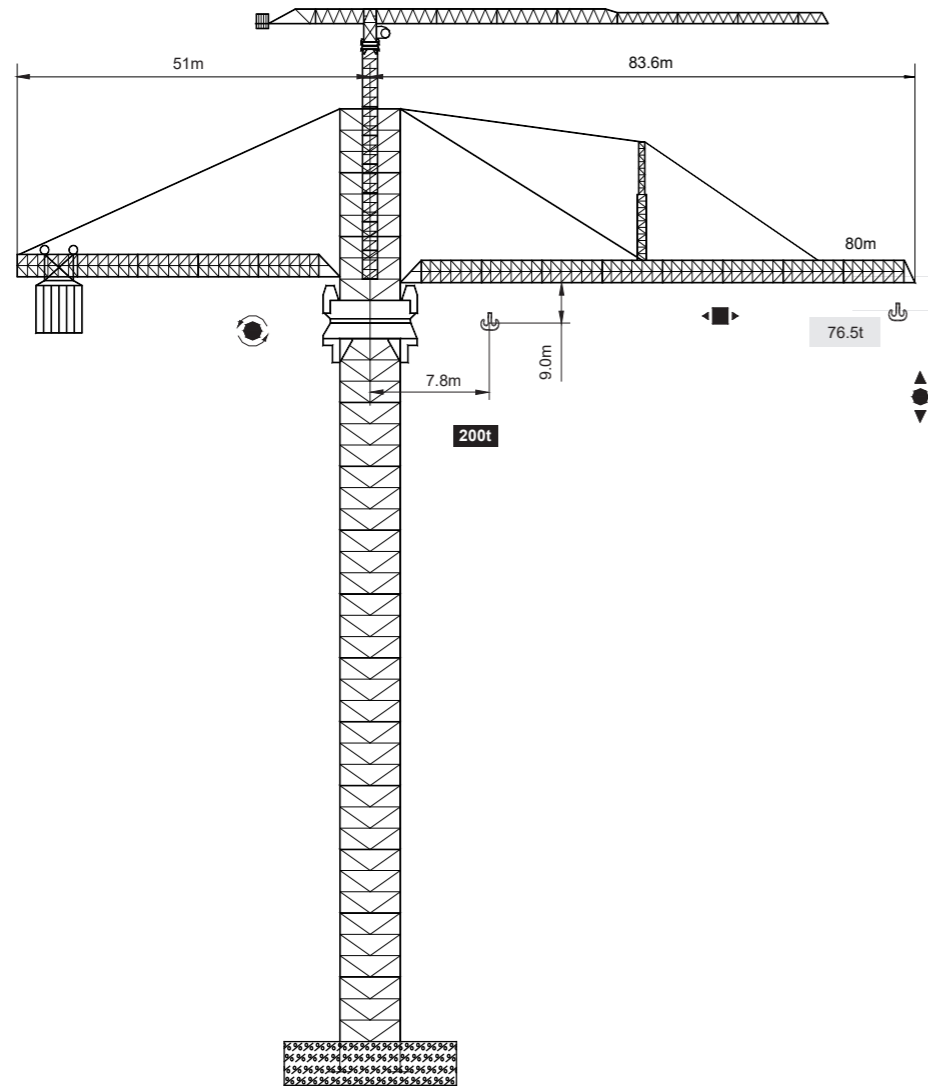


ST8000 200t



CE FEM

Topkit
V 4.0-04092012

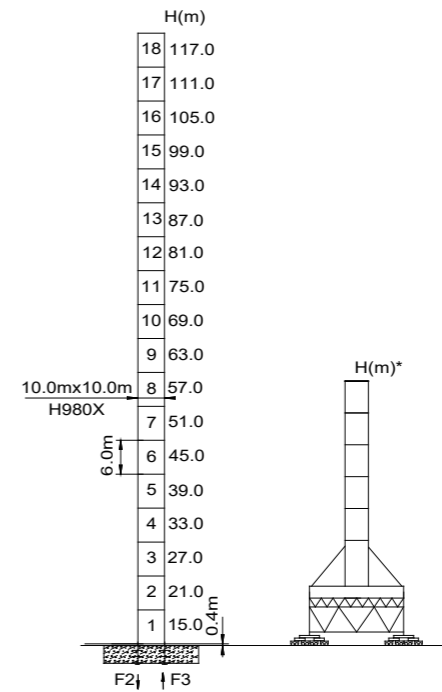
0 0
5 6
9 0

Topkit ST8000
Topkit ST8000

ST8000 200t

載荷表 Load Chart

R	倍率 Fall	R(C _{max}) (m)	C _{max} (t)	30	35	40	50	55	60	65	70	75	80
80	U	40.0	200.0	200.0	200.0	200.0	144.1	125.6	110.9	98.8	88.8	80.3	73.0
	L	66.2	100.0	100.0	100.0	100.0	100.0	100.0	100.0	100.0	92.3	83.8	76.5
70	U	40.0	200.0	200.0	200.0	200.0	144.1	125.6	110.9	98.8	88.8		
	L	66.1	100.0	100.0	100.0	100.0	100.0	100.0	100.0	100.0	92.3		
60	U	40.0	200.0	200.0	200.0	200.0	144.2	125.7	111.0				
	L	60.0	100.0	100.0	100.0	100.0	100.0	100.0	100.0				
50	U	40.0	200.0	200.0	200.0	200.0	144.5						
	L	50.0	100.0	100.0	100.0	100.0	100.0						
40	U	40.0	200.0	200.0	200.0	200.0	200.0						
	L	40.0	100.0	100.0	100.0	100.0	100.0						



	●	■
F2	*	*
F3	*	*
⊗	*	








● 工作狀態支反力 In service reaction ■ 非工作狀態支反力 Out of service reaction
⊗ 整機自由高度重量 (不含平衡重及壓重重量) Total weight of free standing crane (excludes counter weight & ballast.)


Topkit ST8000

ST8000

200t

主要性能參數 Specifications

機構 Mechanism					
	m/min	t	m/min	t	
 LYS	30 70 110	100 50 10	15 38 55	200 100 20	621m >621m*
 DYS	0-20 m/min				
 RYS	0-0.3 rpm				
 RT	*				

 裝機容量 Power supply	kVA
---	---

* 與製造商聯繫 Contact us, please.

☆ 准配置 Standard configuration.

本技術參數不受法律約束，技術信息恕不另行通知。

Specifications and data are not legally binding. For any technical information, please refer to corresponding instructions.

0 0
6 6
1 2

Topkit ST8000

Topkit ST8000