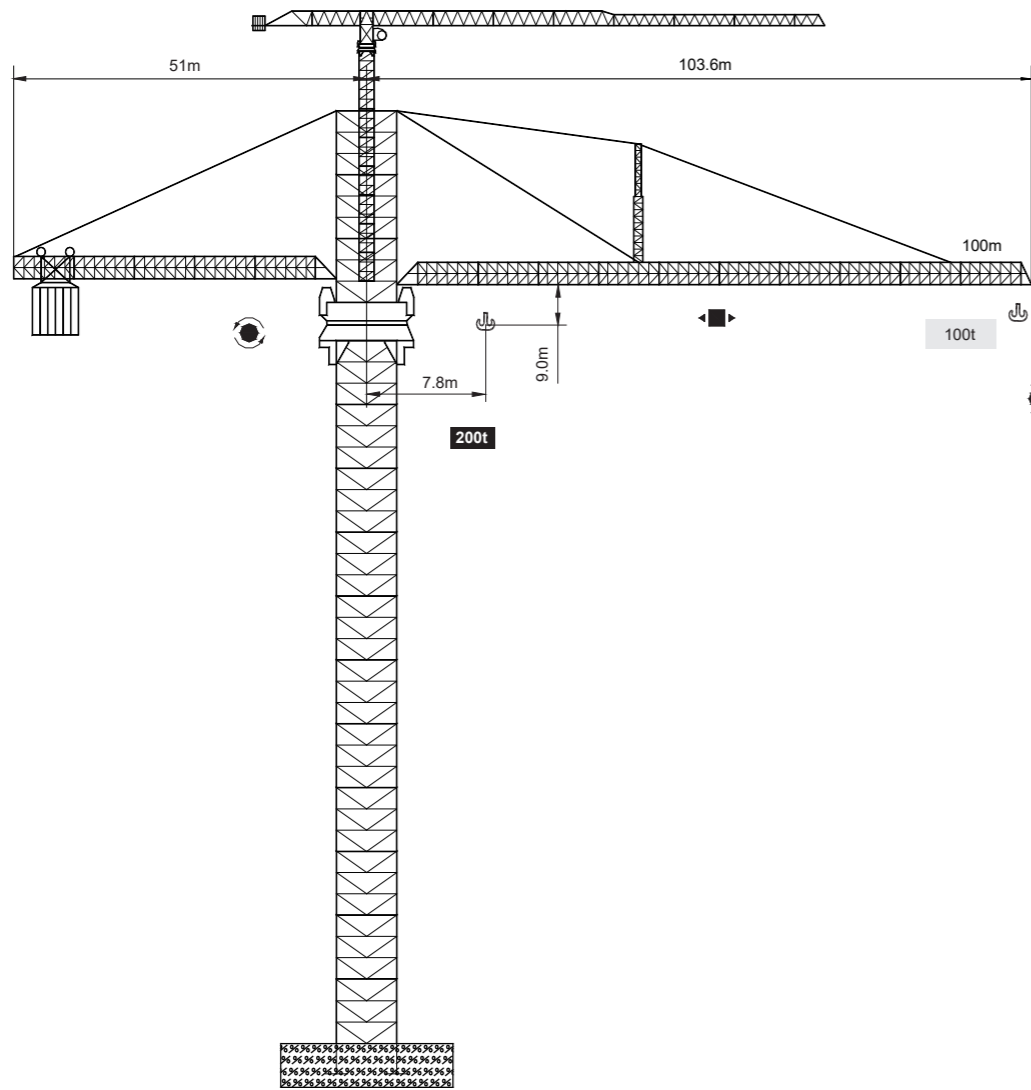




ST10000 200t



Topkit

V 4.0-04092012

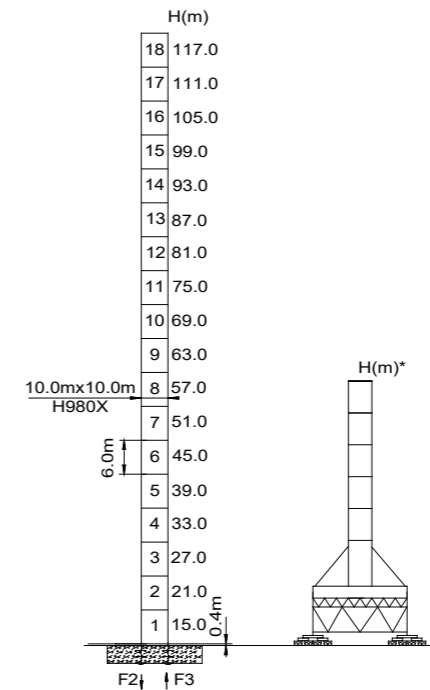
0
5
5
6

Topkit ST10000
Topkit ST10000

ST10000 200t

載荷表 Load Chart

R (m)	倍率 Fall	R (C _{max}) (m)	C _{max} (t)	50	55	60	70	75	80	85	90	95	100
100	⬇	58.1	200.0	200.0	200.0	171.6	155.5	141.9	130.2	120.1	111.2	103.4	96.5
	⬆	100.0	100.0	100.0	100.0	100.0	100.0	100.0	100.0	100.0	100.0	100.0	100.0
90	⬇	58.1	200.0	200.0	200.0	171.6	155.5	141.9	130.2	120.1	111.2		
	⬆	90.0	100.0	100.0	100.0	100.0	100.0	100.0	100.0	100.0	100.0		
80	⬇	58.1	200.0	200.0	200.0	171.6	155.5	141.9	130.2				
	⬆	80.0	100.0	100.0	100.0	100.0	100.0	100.0	100.0				
70	⬇	58.1	200.0	200.0	200.0	171.6	155.5						
	⬆	70.0	100.0	100.0	100.0	100.0	100.0						
60	⬇	58.1	200.0	200.0	200.0	171.6							
	⬆	60.0	100.0	100.0	100.0	100.0							



	●	■
F2	*	*
F3	*	*
⊗	*	

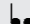






● 工作狀態支反力 In service reaction ■ 非工作狀態支反力 Out of service reaction
 ⊗ 整機自由高度重量 (不含平衡重及壓重重量) Total weight of free standing crane (excludes counter weight & ballast.)


Topkit ST10000

ST10000

200t

主要性能參數 Specifications

機構 Mechanism						
		m/min	t	m/min	t	
	LYS	30	100	15	200	621m >621m*
		70	50	35	100	
		110	10	55	20	
	DYS	0—20 m/min				
	RYS	0—0.3 rpm				
	RT	*				

 裝機容量 Power supply	kVA
---	---

* 與製造商聯繫 Contact us, please.

☆ 准配置 Standard configuration.

本技術參數不受法律約束，技術信息恕不另行通知。

Specifications and data are not legally binding. For any technical information, please refer to corresponding instructions.

0
5
7

0
5
8

Topkit ST10000

Topkit ST10000